

NEW LIFE BIBLE-PRESBYTERIAN CHURCH

44 Salusbury Road, London NW6 6NN

Charity No. 1060655

Tel: 020 7328 0869 (Manse)

Email: newlifebplondon@yahoo.co.uk

Website: www.newlifebpc.org.uk

Supervisory Pastor: Rev Lim Chee Boon

Resident Minister: Pr Mok Chee Cheong

Email: pastor@newlifebpc.org.uk

“For the Word of God and for the testimony of Jesus Christ” (Rev 1:9)

Vol. 26 No. 41

LORD’S DAY 09 OCTOBER 2022

ORDER OF WORSHIP

Morning Service – 11am

Afternoon Service – 3pm

Prelude

The Lord Is in His Holy Temple

Call to Worship

Psalm 36:5-7

Psalm 57:7-11

Opening Prayer

Pr Mok Chee Cheong

Pr Mok Chee Cheong

*Opening Hymn **

RHC 32 – “Immortal, Invisible, God Only Wise”

RHC 34 – “Crown Him with Many Crowns”

Responsive Reading

Psalm 25

*Second Hymn **

Psalm 25 verses 1-7 – 2nd version
(to the tune of Evan, RHC 259)

Scriptural Text

Exodus 21:5-6

1 Corinthians 10:16

Pastoral Prayer

Pr Mok Chee Cheong

Pr Mok Chee Cheong

Sermon Message

Christ, the Servant-Saviour

The Fourfold Fellowship with Christ

*Closing Hymn **

Insert – “Immortal Honours Rest on Jesus’ Head”

RHC 384 – “My Jesus, I Love Thee”

Benediction/3-Fold

Pr Mok Chee Cheong

Pr Mok Chee Cheong

*Amen **

Postlude

The Lord Bless You

** Congregation Stands*

THE LORD IS IN HIS HOLY TEMPLE

The Lord is in His holy temple,
The Lord is in His holy temple:
Let all the earth keep silence,
Let all the earth keep silence before Him -
Keep silence, keep silence before Him. Amen.

THE LORD BLESS YOU

The Lord bless you and keep you;
The Lord lift His countenance upon you,
and give you peace, and give you peace;
The Lord make His face to shine upon you,
And be gracious unto you, be gracious,
The Lord be gracious, gracious unto you. Amen.

SHORTER CATECHISM QUESTION 29

Q: How are we made partakers of the redemption purchased by Christ?

A: We are made partakers of the redemption purchased by Christ, by the effectual application of it to us by his Holy Spirit.

Comments:

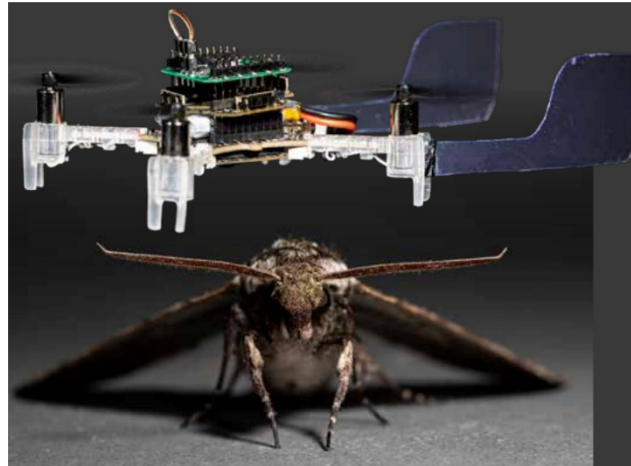
Having seen, in the previous questions, how salvation has been brought within our reach, we now come to learn the way in which we may become possessed of it. In this answer we are told, that while it is Christ who has purchased redemption for us, it is the Holy Spirit who puts us actually in possession of it.

Scriptural Reference:

John 16:13, Romans 8:14

The 'Smellicopter'

Not just copying, but actually using, God's design



'Smellicopter' is the nickname for this autonomous drone that uses a live antenna from a moth (hawkmoth, the type depicted here) to navigate towards smells.

In the expanding research field of *biomimetics* (aka biomimicry or bioinspiration), engineers copy designs they see in nature. It has proven useful time and again in generating new inventions and improving existing technology.¹

There's a clear lesson from this, unfortunately often missed in reporting these engineering success stories. Anyone can see that the engineers' creations have been intelligently designed. So why not also the designs in nature that inspired them? Especially since the copies fall way short of the living originals in many ways. Thus biomimetics points to an Intelligent Designer, not evolution, as the reason living things are so masterfully engineered. And the Bible identifies Him. He is the Lord God, the Maker of heaven and earth and of all life.

Heaven-sent scent sensor

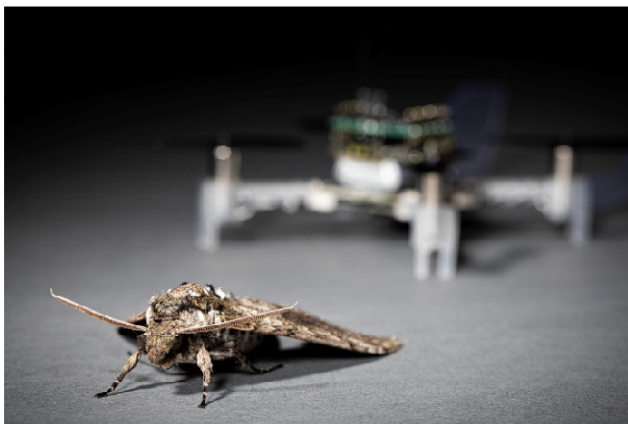


Lead author Melanie Anderson (masked as per local Covid-19 restrictions), a doctoral student of mechanical engineering, holding the Smellicopter.

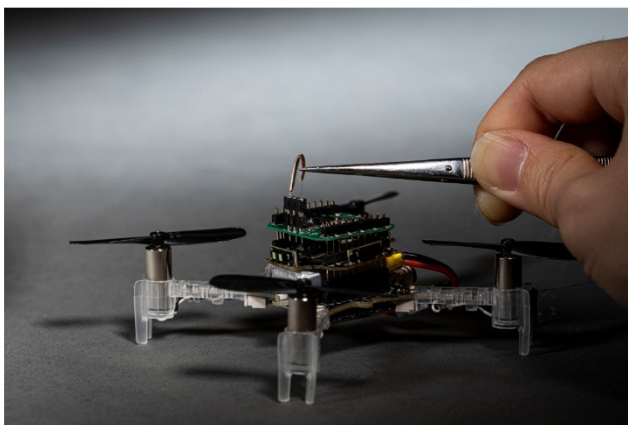
And now, researchers haven't just *copied* one of God's designs, but succeeded by *using* it. Needing a super-sensitive smell detector, University of Washington engineers attached an actual antenna of a moth to their drone quadcopter.^{2,3} Their goal? To build an odour-sensing aerial robot to remotely assess and navigate danger zones; one able to sniff out gas leaks, explosives, or disaster survivors.

The researchers used the antenna of a hawkmoth (*Manduca sexta*) because no human-made odour sensor can match its sensitivity and quick response. The moth's antennae can sense chemicals in the air to find food or potential mates. "Cells in a moth antenna amplify chemical signals," explained one of the researchers, Thomas Daniel, a UW professor of biology. "The moths do it really efficiently—one scent molecule can trigger lots of cellular responses, and that's the trick. This process is super efficient, specific and fast."²

On the prototype 'Smellicopter', the moth antenna is connected to an electrical circuit to monitor the signal from its cells. The drone is fitted with steering technology to track upwind towards the source of the scent detected.



Smellicopter can also sense and avoid obstacles as it travels through the air. Shown here is a hawkmoth in front of the Smellicopter



By adding tiny wires to either end of the antenna (the arc being attached here), the researchers were able to connect it to a circuit and record its responses to a puff of floral scent.

God's design; engineers' short-cut

Melanie Anderson, lead author of the research paper in *Bioinspiration and Biomimetics*, said, "Nature really blows our human-made odor sensors out of the water. By using an actual moth antenna with Smellicopter, we're able to get the best of both worlds: the sensitivity of a biological organism on a robotic platform where we can control its motion."³ As one media report paraphrased, "Sometimes it's just not worth it to try to top Mother Nature."⁴ Of course, the designs are *not* from 'Mother Nature' in evolutionary tandem with 'Father Time', but as earlier stated, from God.

Parts designed to be together

For Smellicopter's sense of smell to work, the moth antenna must still be "biologically and chemically active". Thus a *live* antenna was used. Moths were put "in the fridge to anesthetize them before removing an antenna". The detached antenna stops being biochemically active in just four hours.²

Clearly, the moth antenna is a complex organ designed to be part of an even more complex finely tuned whole. The entire moth body is designed to constantly maintain and sustain all of its parts. These soon break down when isolated.

It brings to mind Paul's metaphor in 1 Corinthians 12, of believers as a body. Individual organs or members play differing roles. Their effective functioning soon ceases if disconnected from the body as a whole.

REFERENCES AND NOTES

1. See creation.com/biomimetics. Return to text.
2. McQuate, S., The Smellicopter is an obstacle-avoiding drone that uses a live moth antenna to seek out smells; washington.edu, 7 Dec 2020. Return to text.
3. Anderson, M. and 4 others, A bio-hybrid odor-guided autonomous palm-sized air vehicle, *Bioinspir. Biomim.* **16**(2):026002, 2020. Return to text.
4. Coldewey, D., This tiny drone uses an actual moth antenna to sniff out target chemicals; techcrunch.com, 8 Dec 2020. Return to text.

- By David Catchpoole, article taken from *Creation magazine* volume 43 issue 3, July 2021

WELCOME TO NEW LIFE B-P CHURCH LONDON

Our Lord's Day activities begins with the **Pre-Worship Prayer Meeting** at **10:15 am** followed by the **Worship Services** at **11.00 am and 3.00 pm**. Do invite your friends to come to Church.

NEWS/ANNOUNCEMENTS

Dear Worshippers, we extend a warm welcome to you this Lord's Day. We hope that you have a blessed time of worship with us today.

For those unable to attend Church in person, we are streaming our worship services online. To join our online services or for more information, please call the church manse, or email us at [admin 'at' newlifebpc.org.uk](mailto:admin@newlifebpc.org.uk).

Tithes & Offerings – There will be an offering box at the entrance to the Church Sanctuary for you to place your offerings in.

After-Service Fellowship – Join us for lunch fellowship after the morning worship service. Please bring your own lunch as only drinks will be provided.

Worship Service Collections: Last Sunday - £1070.00

Church Maintenance Fund Total: £9,440.50

MEMORY VERSE

Last Week

"The LORD is my strength and song, and he is become my salvation: he is my God, and I will prepare him an habitation; my father's God, and I will exalt him."

Exodus 15:2

This Week

"All things are lawful unto me, but all things are not expedient: all things are lawful for me, but I will not be brought under the power of any."

1 Corinthians 6:12

Next Week

"Now therefore, if ye will obey my voice indeed, and keep my covenant, then ye shall be a peculiar treasure unto me above all people: for all the earth is mine: And ye shall be unto me a kingdom of priests, and an holy nation."

Exodus 19:5-6

Pre-cautions for Worship Services held at the church premises:

With the lifting of the legal Covid restrictions on 24th Feb 2022, we will continue observing the following precautions:

- No offering collection during the worship service. Offerings can be made at the offering box when entering or exiting the church.
- Temperature measurements will still be taken for every worshipper and visitor for the time being. We continue to urge those who feel unwell (especially with Covid symptoms) not to come to the church services but join us at our online services.
- During worship services, please continue to sit with your own households.
- As per the current government advise, we suggest you use a face covering when attending the services. Please bring your own face covering.

To join our online services or for more information, please visit the church website (www.newlifebpc.org.uk) or call the church manse (020 73280869).

With the Lord's blessing,

John Poh & Jonathan Kim,
Task Force Members